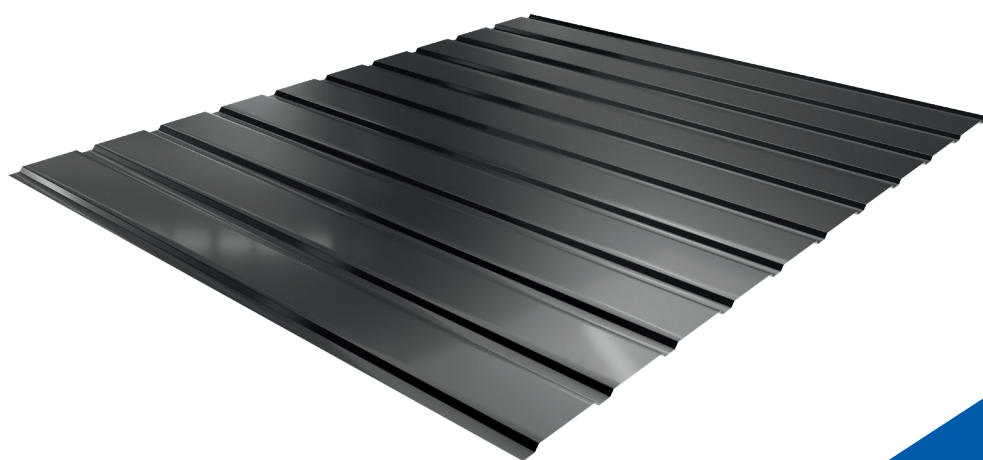





Trapezoidal metal sheet

T-7



Product data sheet

 34-700 Rabka-Zdrój
ul. Kilińskiego 49a

 T: +48 18 26 85 200
F: +48 18 26 85 215

 biuro@blachotrapez.eu
www.blachotrapez.eu

General information

The trapezoidal sheet is unique due to its simplicity and expressive form. It helps create eye-catching constructions that often break the traditional division between roof and facade.

Advantages and properties

Cut to measure, the sheet comes in a rich range of colours that create unlimited possibilities.

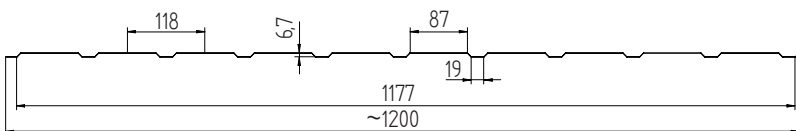
Technical details

Total width:	~1200 mm	Pitch:	118 mm
Cover width:	1177 mm	Width of crown:	87 mm
Thickness of the finished product (steel):	0,4-0,5 mm	Width of valley:	19 mm
Thickness of the finished product (aluminium):	0,6 mm *1	Recommended length:	max 6 mb *2
Depth of profile:	6,7 mm		

*1 Available in the T-7 facade version only.

*2 Blachotrapez is not responsible for mechanical damage caused during transport in sheets longer than the ones recommended in the Technical Specifications of the Profile. Ordering sheets longer than recommended increases the risk of damage during transport, processing and assembly. Sheets longer than recommended may be deformed. This is due to the production technology and the expansion of the material under the influence of temperature amplitude.

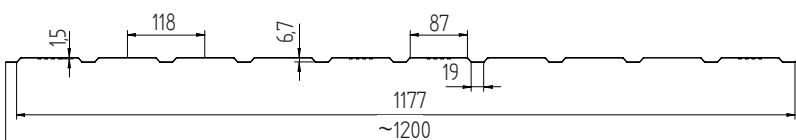
T-7 Elevation – Dimensions and welt, Cross-section



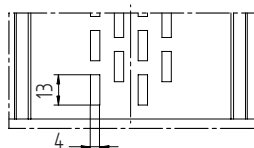
SHEET FOLDING VIEW



T-7 PRO – Dimensions and welt, Cross-section



SHEET FOLDING VIEW





Application

T-7 trapezoidal sheets, delivered as ready-made elements, used for wall cladding (e.g. garage doors, shelters, fences, chimney finishes) and ceiling linings. These sheets are used to finish and protect constructions. Trapezoidal sheets should be used in accordance with technical designs, instructions and installation recommendations of the manufacturer, applicable standards and technical construction regulations.

Remove the anti-condensation barrier at the joints between the sheets and butting up to the eaves by cutting, so that water and moisture from the outside is not absorbed into the layer of material.

When forming trapezoidal sheets (especially with non-woven interlinings), transverse bending of U-shaped sheets can occur, for technical and technological reasons. In this event, it is necessary to use additional 19mm-long screws (to join the sheets together), in order to lay the sheets along longitudinal overlaps. This is a natural occurrence for which the Manufacturer is not responsible.

Blachotrapez recommends to purchase all materials required for one investment under one purchase order. Otherwise it is possible that the colour shades and texture will vary which shall not be attributable to the Manufacturer.

The applied material has a wide range of applications due to the environmental classification, which is confirmed by a long warranty period depending on material (see the separate warranty form uploaded to our website www.blachotrapez.eu)



Research results / documentation

The T-7 product features a **Declaration of Performance** on the basis of the Standards and Regulations for construction products in force.

We also have Hygienic Certificate No. B-BK-60211-1315/19 issued in 2020 by the National Institute of Hygiene (PZH). These documents are issued to implemented orders. In order to obtain them, please contact the Quality Control Department - the scheme of procedures is provided on our website.



Additional information

For all types of profiles we have properly prepared instructions for transport, storage, cutting and maintenance of sheet metal. To familiarize yourself with the content, please visit www.blachotrapez.eu and contact our Technical and Trade Consultants or branches of our company - addresses can also be found on our website.

We also have numerous awards and certificates, which you can find on our website www.blachotrapez.eu

