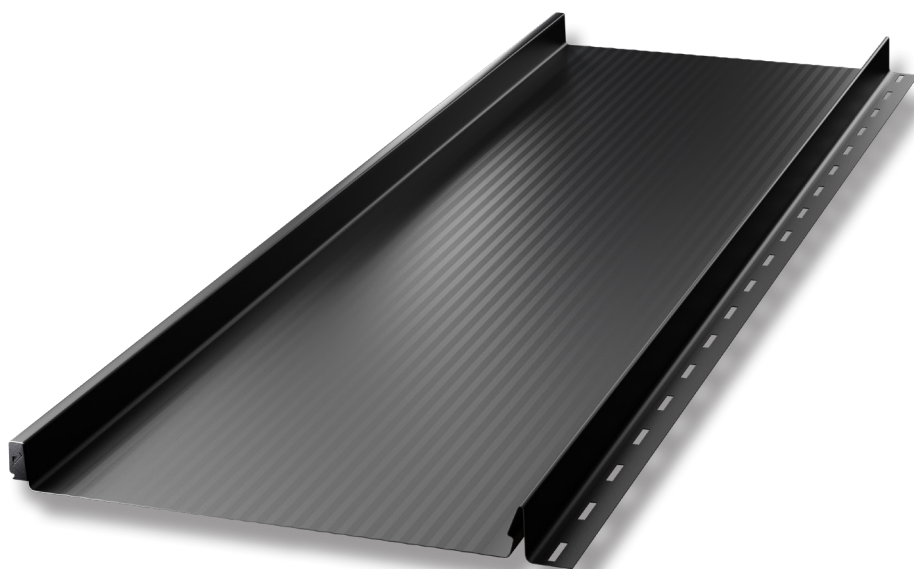


# Panel Terrano 30/316



product data  
sheet



## General Information

Roofing and façade panels are a solution referring to the traditional way of covering. The traditional method of covering - sheet mounted on the seam (known as felt) - requires experience and roofing craftsmanship.

## Advantages and features

Functionality, quick and hassle-free installation, still requiring specialist knowledge, are combined with a unique design of the product. The optimised seam height and its rectangular shape give your roof covering a harmonious, elegant and modern appearance. The light and eye-catching visual effect is due to the latch lock technology. In addition, the use of mini-wave and nano-wave technologies means that Terrano reflects light and the 'waving' effect caused by stress and slight unevenness in the surface is less noticeable.

The panels are available in two different sizes, in various options depending on the customer's needs, e.g. with a cut-out under a fold, a cut-out with a fold and in a flat, nano-wave, mini-wave or trapezoidal longitudinal ribbing version.

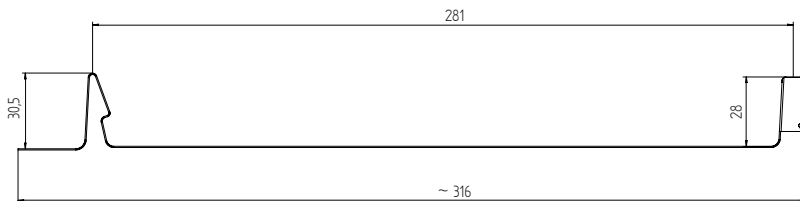
## Technical details

Total width:	~316 mm	Minimum sheet length:	1400 mm
Overall coverage width:	281 mm	Recommended length:	max 8000 mm *
Thickness of finished product (steel):	0,5 mm	Welt height:	28 mm
Thickness of finished product (steel):	0,6 mm	"Cliik" height:	30,5 mm

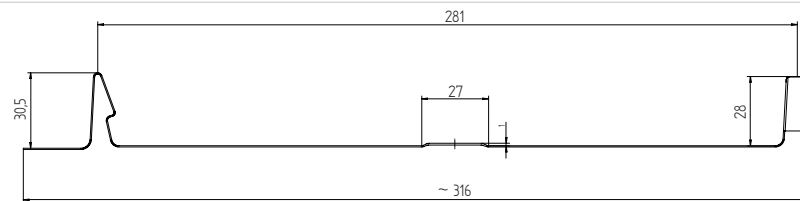
\* Blachotrapez shall not be liable for mechanical damage caused during transport, if the sheets are longer than recommended in the Profile Technical Details. Ordering sheets that are longer than recommended increases the risk of damage during transport, processing and installation. Sheets longer than recommended may be deformed. This is due to the production technology and the expansion of the material under the influence of temperature amplitude.

## Panel Terrano 30/316 – dimensions, cross-section and longitudinal section.

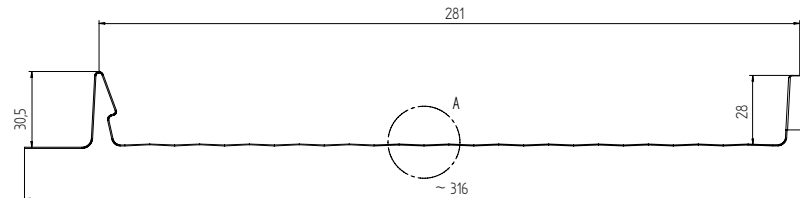
Flat version



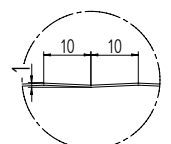
Ribbed version



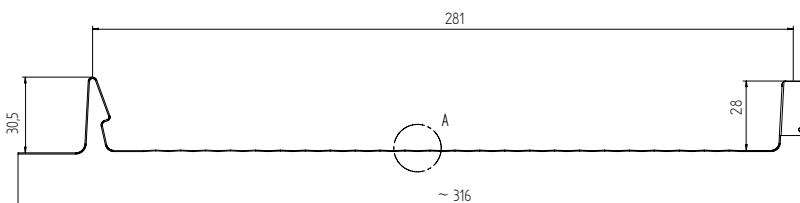
Mini-wave version



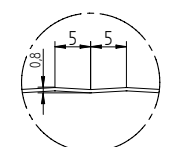
Detail A (2:1)



Nano-wave version



Detail A (2:1)



## Application

Roofing and façade panels, supplied in the form of ready-made elements, used in the construction industry for wall cladding and roofing with a slope of not less than 9°. Roofing and façade panels, used as finishing and safety elements in buildings. Roofing and façade panels should be used in accordance with the technical designs of the buildings, manufacturer's installation instructions and recommendations, applicable standards and technical and construction regulations.

Blachotrapez recommends that the Buyer purchases all necessary materials for one investment in one order. In case of making an additional ordered, the colour shades and textures may be different, which is beyond the Manufacturer's control.

If the panels are to be joined lengthwise, this information must be given when ordering.

The applied feedstock has a wide range of applications due to its environmental classification, which is supported also by a long guarantee period depending on the material (see separate guarantee form on our website: [www.blachotrapez.eu](http://www.blachotrapez.eu)).

## Research results / Documentation

The Terrano panel has been granted a Declaration of Performance, drawn up on the basis of the standards and regulations concerning construction products that are relevant to our business operations.

We also have a Hygienic Certificate number B-BK-60211-1315/19, issued by the National Hygiene Institute PZH. These documents are issued with the completed order (to obtain them, please contact the Quality Control Department - the scheme of procedures is available on our website).

## Assembly

Thanks to the use of an external lock, the panel is easy and quick to install. Enlarged openings in the roof valley installation clips compensate for surface tension, further enhancing the visual effect. For an even more aesthetically pleasing roof, there is an option to add a bendable cap, which perfectly masks the joints between two panels.

During installation and operation of the panels for each type of sheet metal, it is possible the waving effect may occur on the flat surfaces of the sheet metal. Such a sheet takes the shape of the roof substrate. Waving of such panels is a natural and frequent phenomenon. This is due to the technology of production, assembly and operation of these sheets, their thermal expansion and the phenomenon of light reflection. To minimise the waving effect, the panels should be installed on a very carefully constructed and levelled substrate, in accordance with the rules of the trade and installation instructions. Using a matt coating is a guarantee of positive effects (less light reflection), just like choosing panels with longitudinal ribbing, mini-wave or nano-wave. In addition, there are options with a cut-out with a fold or a cut-out for a fold available. With these options, you can stiffen the bottom edge of the Terrano Panel, and minimise transverse waving effect. It is also natural for the panel to make some noise in windy conditions. To reduce this effect, Terrano IZO Panel can be selected, or the following can be applied to the standard versions: hairy membrane, damping tape, structural mat, HydroControl self-adhesive anti-condensation coating or other materials.

## Additional Information

For all types of profiles, we have specially prepared transport, storage, cutting and sheet metal maintenance instructions. Please visit our website: [www.blachotrapez.eu](http://www.blachotrapez.eu), and contact our Sales and Technical Advisors in our branches, the addresses of which can also be found on the website.

We hold numerous awards and certificates, which can be viewed on our website: [www.blachotrapez.eu](http://www.blachotrapez.eu)